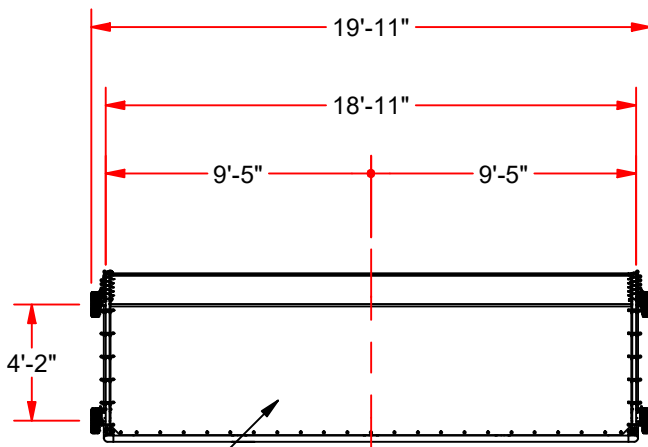


**CUSTOM GRAPHICS AVAILABLE FOR REAR AND SIDE COVERS**

SEE SECOND PAGE FOR DETAILS

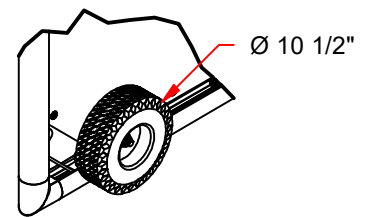
**CLUB SHELTER**

SHOWN WITH SANDBAG ANCHORS (SWG-SS-A, INCLUDED) AND OPTIONAL WHEEL KITS (NSGWK)



REMOVABLE COVER  
UV PROTECTED &  
WEATHER RESISTANT

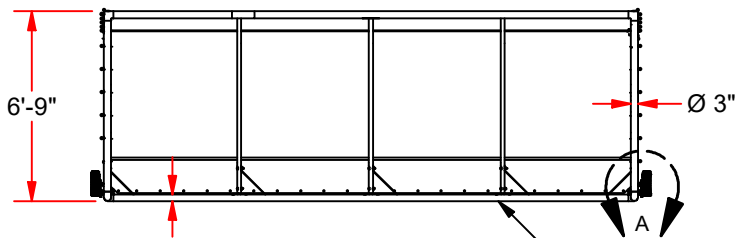
**TOP VIEW**



**DETAIL A**

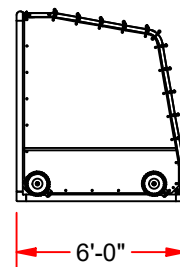
ADAPTABLE FRAME MOUNTED NO FLAT TIRE WHEEL KIT (SET OF 4, NSGWK)

NOT INCLUDED - SEE OPTIONAL EQUIPMENT, SHOWN AT ANGLE FOR CLARITY



**FRONT VIEW**

ALUMINUM FRAME  
DURABLE & LIGHTWEIGHT



**SIDE VIEW**

PROJECT NAME \_\_\_\_\_

ARCHITECT \_\_\_\_\_

PROJECT NUMBER \_\_\_\_\_

CONTRACTOR \_\_\_\_\_


**CLUB SHELTER FEATURES:**

- POWDER COATED ALUMINUM FRAME - WHITE
- WEATHER RESISTANT AND UV PROTECTED COVER AVAILABLE IN SIX COLORS - SEE SELECTION
- COVERS (3) ATTACH TO SHELTER FRAME WITH CLIPS & BUNGEEES TO PROVIDE A SNUG FIT
- SHELTER SAND BAG ANCHORS INCLUDED (QTY 4 SWB-SS-A)
- CUSTOM GRAPHIC AREAS LOCATED ON REAR (200" W x 40" H) AND BOTH SIDE (48" W x 36" H) COVERS, CONTACT CUSTOMER SERVICE FOR ARTWORK REQUIREMENTS AND PRICING
- ACCOMMODATES ONE 15' OR TWO 7 1/2' TEAM BENCHES
- LISTED TOTAL BALLAST REQUIREMENT 400 lbs
- LIMITED WARRANTY

**COVERS AVAILABLE IN SIX COLOR CHOICES**  
 SPECIFY FROM SELECTION:

- |                          |                          |                          |                          |                          |                          |
|--------------------------|--------------------------|--------------------------|--------------------------|--------------------------|--------------------------|
| BLACK                    | FOREST GREEN             | GRAY                     | NAVY BLUE                | RED                      | ROYAL BLUE               |
| <input type="checkbox"/> | <input type="checkbox"/> | <input type="checkbox"/> | <input type="checkbox"/> | <input type="checkbox"/> | <input type="checkbox"/> |

| OPTIONAL EQUIPMENT |                               |           |
|--------------------|-------------------------------|-----------|
| QTY                | DESCRIPTION                   | ID NUMBER |
|                    | SOCCER GOAL WHEEL KIT         | NSGWK     |
|                    | SOCCER GOAL CARRY CART (PAIR) | SGT-24    |
|                    | IN-GROUND ANCHORS (PAIR)*     | SGA-60    |

\*EQUIPMENT REQUIREMENT: TWO PAIRS OF ANCHORS PER INDIVIDUAL GOAL FRAME (SGA-60 QTY: 2 WHEN ORDERING)

PROJECT NAME \_\_\_\_\_

ARCHITECT \_\_\_\_\_

PROJECT NUMBER \_\_\_\_\_

CONTRACTOR \_\_\_\_\_